

Technical Data Sheet



The United States of America:
Peter Kwasny Inc.
62-64 Enter Lane,
Islandia, NY 11749

Distributed in

Canada by
Peter Kwasny Spraypaint Canada Inc.
2275 Lakeshore Blvd. West, Suite 530
Toronto, ON. M8V 3Y3

Toll free North America
Phone: 1-844-426-6330 / Fax: 1-866-226-6434
order@kwasny.us / service@kwasny.us
www.spraymax.com

SprayMax®
2K Clear Satin
322 g NET WT. 11.4 oz
Art. Nr. 3680067



Product

Description / Purpose

2K Clear Coat available in two gloss levels (Mat & Satin). Developed for the Small Damage Repair Process or complete painting of mounting parts.

Properties

- Very fast drying
- Excellent flow
- Highest chemical and weathering resistance
- Gloss units at 85°: Matt 12 ± 3 / Satin 40 ± 3

Material base

Two-component acrylic resins
Activator: aliphatic isocyanates

Gloss level

Semi Matt,
40 ± 3 gloss units at 85° measurement angle
75 ± 3 gloss units at 65° measurement angle
on completely dried basecoats

Solid content

approx. 35 % by weight relating to the diluted paint

EPA Coating Category

CCP Clear Coatings Product
PWR Limit 1.50

CARB Aerosol Rule Coating Category (01/2017)

TCC Two Component Coating
PWR Limit 1.20

Substrate

Solvent and waterborne base coat systems, old paint coats dried according to manufacturer's instructions (cleaned and sanded).

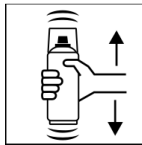
Processing

Protection measures



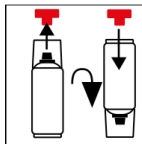
Wear personal protection equipment.
(respiratory mask/gloves/goggles)
For more information, see safety data sheet.

Shake



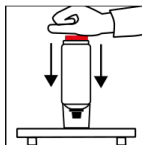
Before activating, shake can thoroughly for 2 minutes again from when the mixing balls are heard.

Place red button



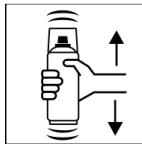
Remove the red button from the cap. Turn the can by 180° and fit the button onto the pin.

Press red button



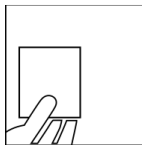
Turn the can upside down and place on a firm surface. Press the red button with the palm of your hand until it clicks into place.

Shake



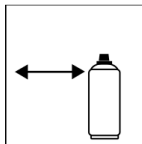
After activating, shake can again thoroughly for 2 minutes, again from when the mixing balls are heard.

Spray to test



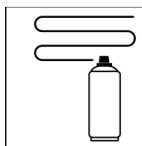
After shaking the can, test spray and check compatibility with the surface and the colour.

Spraying distance



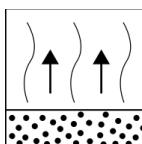
6 - 8 inches / 15 - 20 cm

Spray passes



Dry film thickness 1.6 mil (40 µm)
(approx. 1 - 2 spray coats)

Flash-off time



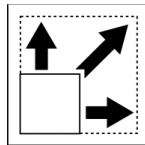
Flash time:
approx. 10 - 15 min between each spray coat

Processing conditions



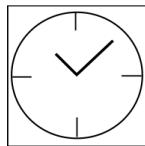
Optimum application at 64° F - 77° F (18° C - 25° C) and a relative humidity from 40 - 50 %.

Coverage



approx. 5.4 - 8.1 sq ft (0.5 - 0.75 m²) / aerosol at approx. 1.2 - 2.0 mil (30 - 50 µm) dry film thickness

Drying



dust dry: 12 min

dry to touch: 80 min

Ready for polishing:

DO NOT POLISH (this will cause undesired glossing of the surface)



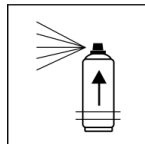
IR drying possible, Respect technical manual

Forced dry 60 min at 140° F

10 min flash-off time before forced dry

IR drying 15 min

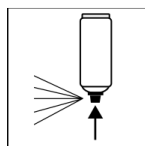
Pot life



Approx. 48 h at 68° F (20° C) room temperature and a relative humidity of approx. 40 - 50 %.

The processing time depends on the ambient temperature. Higher temperatures reduce the pot life, lower temperatures will prolong it.

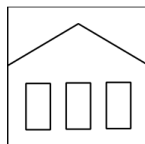
Finish



After painting, turn the can upside down and spray the valve until empty.

Additional Information

Shelf Life



36 months (not activated)

The usage period refers to an unused can that is stored correctly at a temperature of 68° F / 20° C and a relative humidity below 60%. The can must be stored and transported in an upright position in a dry place where it is protected against chemical and mechanical influences. The safety information on the can and all statutory provisions applicable for the storage site must be observed.

Disposal



The completely emptied spray cans must be disposed of in the recycling system. Cans with hardened material must be disposed of as special waste.

Note

For professional use only.

Identification, see safety data sheet.

The contents in this technical data sheet were created with great care and reflect our current state of knowledge. They provide the user with application-specific information and do not promise certain properties. The information is non-binding and we accept no liability for its integrity, accuracy and completeness. They do not relieve the user of their duty to check the suitability of our product for the intended purpose. The warnings printed on our labels must be respected. Our brands and patents are protected by copyright. All rights reserved. We reserve the right to update, amend or supplement the content of the information without prior notice.